

The Bramble Hat designed by *Fiona Drake*

The Bramble Hat is an easy going Fairisle pattern knit in the round. With generous proportions it can be worn in a slouchy style or pulled down low for those blustery days.

With the three generous hanks of Laxton's Sheep Soft yarn you will also achieve a second smaller (S) hat which is suitable for age 9 and up; and there are more patterns available for any yarn you may have left over.

This pattern is a four stitch repeat and is suitable for knitters with some experience in Fairisle knitting and knitting in the round.



Materials

- Three 100g hanks of Laxton's Sheep Soft DK Yarn in 3 colours. C1 : C2 : C3
- 4mm double pointed needles, Dpns (or circular needles if you prefer)
TIP: Bamboo needles are good because they stop your stitches from sliding off
NB. for simplicity this pattern does not require smaller needles for the rib.
- The gauge over the pattern is 27sts and 25 rows over 10cm.
It is important to get this gauge for sizing and for yarn distribution
- A stitch marker to mark each round
- Large eye needle for sewing in ends
- 9cm diameter pompom maker (or you can use card)

Abbreviations

K: knit

P: Purl

Sts: Stitches

K2tog: Knit the next 2sts together

M1: Make 1 stitch: Insert left needle, from front to back, under the strand or bar of yarn that runs between last stitch on left hand needle and first stitch on right hand needle; knit into the back of the bar to create a new stitch. Twisting the bar in this way stops a hole from forming.



The Bramble Hat designed by *Fiona Drake*

Now it's time to choose your colour order. The colours on the chart are just for reference.

Write the colour name in the box to help you remember.

Please note: Once you choose your colours, you will need to keep the **same order** for further patterns. This will ensure you have enough yarn to complete additional patterns.

C1.	
C2.	
C3.	

Let us begin..

With C1 and 4mm dpns (or circulars) long tail cast on 124sts (S: 112) plus 1 extra stitch to join in the round.

TIP: A long tail cast on stretches almost the same as the ribbing

To join in the round, knit the last stitch cast on together with the first stitch, being careful not to twist. Place your marker.

If using Dpns, distribute your stitches 32/28/32/32.
(S: 28 on each)

TIP: Make the first sts on each needle a k2, this helps prevent ladders or stretched areas appearing.

For the brim:

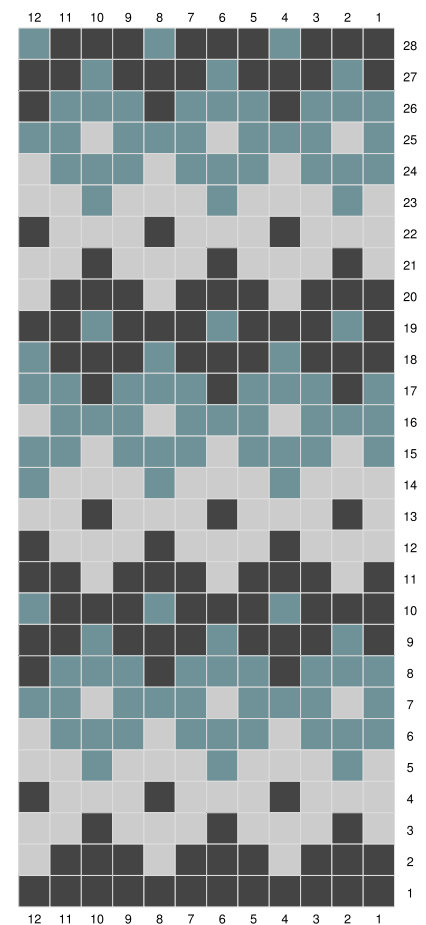
- *K2, P2* for 10 (S: 8) rounds
- Knit 1 round (this creates the crease for turning the cuff)
- *K2, P2* for 10 (S: 8) rounds
- *K15, M1* knit last sts = 132 stitches
- (S: *K14, M1* =120sts)

If using Dpns distribute your stitches 33sts (S: 30sts) on each needle.

Now, follow the chart pattern starting on row 1 up to row 27 (S: 18) repeating the pattern for each round and changing colours as you go. Wrap your yarns around each other every 3rd stitch or use the method which suits you best. Be mindful of your gauge here.

TIP: You can keep all 3 yarns attached to your knitting by just keeping the yarn not in use out of the way. Take a moment to unravel the yarns as you begin each new colour and then you'll have no ends to sew in.

The full written instructions are on the next page.



The Bramble Hat designed by *Fiona Drake*

C1.	
C2.	
C3.	

Written instructions for the large Bramble Hat and small Bramble Hat Fairisle chart rounds:

1. *C1K round*
2. *C1K3, C2K1*
3. C2K1, C1K1, *C2K3, C1K1* C2K2
4. *C2K3, C1K1*
5. C2K1, *C3K1, C2K3* C3K1, C2K2
6. *C3K3, C2K1*
7. C3K1, C2K1, *C3K3, C2K1* C3K2
8. *C3K3, C1K1*
9. C1K1, C3K1, *C1K3, C3K1* C1K2
10. *C1K3, C3K1*
11. C1K1, C2K1, *C1K3, C2K1* C1K2
12. *C2K3, C1K1*
13. C2K1, C1K1, *C2K3, C1K1* C2K2
14. *C2K3, C3K1*
15. C3K1, C2K1, *C3K3, C2K1* C3K2
16. *C3K3, C2K1*
17. C3K1, C1K1, *C3K3, C1K1* C3K2
18. *C1K3, C3K1*
19. C1K1, C3K1 *C1K3, C3K1* C1K2 (Stop pattern here for size S)
20. *C1K3, C2K1*
21. C2K1, C1K1, *C2K3, C1K1* C2K2
22. *C2K3, C1K1*
23. C2K1, *C3K1, C2K3* C2K2
24. *C3K3, C2K1*
25. C3K1, C2K1, *C3K3, C2K1* C3K2
26. *C3K3, C1K1*
27. C1K1, C3K1, *C1K3, C3K1* C1K2
28. *C1K3, C3K1*

For both Size hats knit 1 full round in Colour 1.
Next begin the decreasing for the crown.



The Bramble Hat designed by *Fiona Drake*

Large Hat crown decreasing with C1

1	*K10, K2tog*
2	Knit round = 121sts
3	*K9, K2tog*
4	Knit round = 110sts
5	*K8, K2tog*
6	Knit round = 99sts
7	*K7, K2tog*
8	Knit round = 88sts
9	*K6, K2tog*
10	Knit round = 77sts
11	*K5, K2tog*
12	Knit round = 66sts
13	*K4, K2tog*
14	Knit round = 55sts
15	*K3, K2tog*
16	Knit round = 44sts
17	*K2, K2tog*
18	Knit round = 33sts
19	*K1, K2tog*
20	K round = 22sts
21	*K2tog* = 11sts

Cut Yarn and thread through the remaining 11 stitches, pull tight and secure.

With Colour 3, finish off your hat with a jolly pompom. 9 cm is a good size but go with a size that suits you; don't over stuff it or your hat will be top heavy.

If you have knit both hats, you should have yarn left and just enough to knit one pair of Daphne Wristies.

NB. Bear in mind that different tensions and sewing in the ends all use up the yarn.

Weigh your yarn to make sure.

C1 = 48g

C2 = 43g

C3 = 29g (after pompom)

Smaller Hat crown decreasing with C1

1	*K8, K2tog*
2	Knit round = 108sts
3	*K7, K2tog*
4	Knit round = 96sts
5	*K6, K2tog*
6	Knit round = 84sts
7	*K5, K2tog*
8	Knit round = 72sts
9	*K4, K2tog*
10	Knit round = 60sts
11	*K3, K2tog*
12	Knit round = 48sts
13	*K2, K2tog*
14	Knit round = 36sts
15	*K1, K2tog*
16	Knit round = 24sts
17	*k2tog*
18	Knit round = 6sts

Cut yarn and thread through the remaining 11 stitches, pull tight and secure.